

INDEX

HANGERS

BEAM CLAMP

Beam Clamp	1
Top Beam Clamp	1
Top Beam Clamp Threaded	2
Beam Clamp - Top Threaded	2
Beam Clamp - Centre Threaded	3
Beam Clamp - Wide Throat	3
Beam Clamp - Wide Throat Threaded	3

CONDUIT FITTINGS

RIGID/IMC STEEL CONDUIT

Insulating Bushing	4
Insulating Bushing - Set Screw Type	4
Insulating Bushing - Grounding Type	5
Insulating Bushing - Steel	5
Reducing Bushing-Flush In Type	6
Reducing Bushing-Hex Head Type	7
Enlargers	8
Adaptors	8
Rain Tight Hub	9
Chase Nipple	9
Close Nipple	10
Long Nipple	10
Reducing Nipple	11
Conduit Coupling	11
Reducing Coupling	12
Split Coupling	12
Three Piece Coupling	13
Set Screw Connector	13
Set Screw Coupling	14
Recessed Head Plug	14
Locknut	15
Grounding Locknut	15
Union - Exp Proof Des (UNF)	16
Union - Exp Proof Des (UNY)	16
Lay In Lugs	17

FLEXIBLE LEAD COATED CONDUIT

LC Connector - Straight	18
LC Connector - Female	18
LC Coupling	18

BX FLEXIBLE CONDUIT

BX Flex Connector - Straight	19
BX Flex Connector - 90 degrees	19

LIQUID TIGHT CONDUIT

LT Connector - Straight	20
LT Connector - Female	20
LT Connector - 45 degrees	21
LT Connector - 90 degrees	21
LT Coupling	21

CONDUIT SUPPORT

Rigid Conduit Strap	22
Spacer/Clamp Back	22
Right Angle Conduit Support	23
Parallel Conduit Support	23
U Bolt	23
EMT Strap	23

CONDUIT BODY

Conduit Body Series 5

Type LB	25
Type LL	25
Type LR	26
Type T	26
Type C	27
Type TB	27
Type X	28
Type E	28

Conduit Body Form 7

Type LB	30
Type LL	30
Type LR	31
Type T	31
Type C	32
Type TB	32

CONDUIT OUTLET BOX

Type GUAT	33
Type GUAX	33

BEAM CLAMP

Beam Clamp

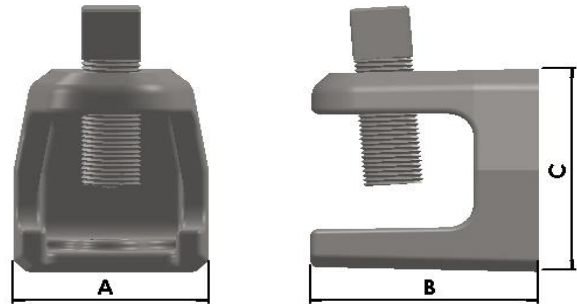
Used as a hanger with back and bottom thread rod connections

Robust metallic construction

Material: Iron

Finish: Electrogalvanized

(Use suffix HDG with Cat No. for Hot Dip Galv.)



CATNO.	SIZE	THREAD ROD SIZE	DIMENSIONS		
			A	B	C
BC100	1"	1/4"	30.16	34.93	34.93
BC200	2"	3/8"	45.80	44.60	44.80
BC250	2-1/2"	1/2"	60.33	60.33	53.98

** All dimensions in mm

Top Beam Clamp

Used to hang conduits etc to mounting surface with help of thread rod

Through hole vertical support for thread rod.

Material: Iron

Finish: Electrogalvanized

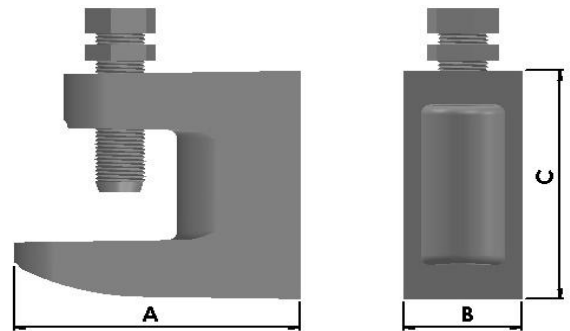
(Use suffix HDG with Cat No. for Hot Dip Galv.)



TYPE D



TYPE DA

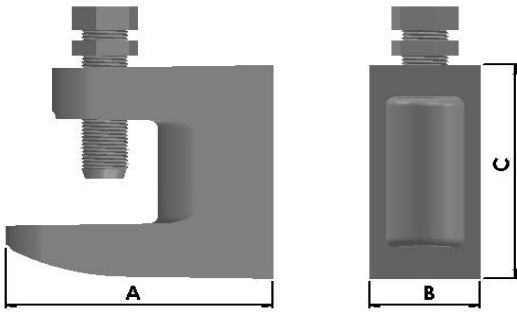


CATNO.	ROD SIZE	HOLE SIZE	FLANGE SIZE	DIMENSIONS		
				A	B	C
BC06D	6 mm	7 mm	18 mm	38.10	17.46	34.93
BC08D	8 mm	9 mm	18 mm	38.10	17.46	34.93
BC08DH	8 mm	9 mm	19.4 mm	43.66	20.64	42.07
BC10D	10 mm	11 mm	19.4 mm	43.66	20.64	42.07
BC10DH	10 mm	11 mm	22.3 mm	43.66	20.64	42.07
BC12D	12 mm	13 mm	25.5 mm	57.15	21.43	53.98
BC16D	16 mm	17 mm	26.8 mm	57.15	28.58	58.74
BC06DA	6 mm	7 mm	18 mm	38.10	17.46	34.93
BC08DA	8 mm	9 mm	18 mm	38.10	17.46	34.93
BC08DHA	8 mm	9 mm	19.4 mm	43.66	20.64	42.07
BC10DA	10 mm	11 mm	19.4 mm	43.66	20.64	42.07
BC12DA	12 mm	13 mm	25.5 mm	57.15	21.43	53.98
BC20DA	20 mm	21 mm	33.1 mm	63.50	34.93	69.06

** All dimensions in mm

Disclaimer: Dimensions are for reference purpose and are subject to change within permissible limits that do not affect the usage of product. Actual product may vary from above picture.

BEAM CLAMP



Top Beam Clamp - Threaded

Used to hang conduits etc to mounting surface with help of thread rod

Through threaded to secure thread rod without nut

Material: Iron
Finish: Electrogalvanized
 (Use suffix HDG with Cat No. for Hot Dip Galv.)

CATNO.	SIZE	THREAD SIZE	FLANGE SIZE	DIMENSIONS		
				A	B	C
BC06MT	6 mm	M6	18 mm	38.10	17.46	34.93
BC08MT	8 mm	M8	18 mm	38.10	17.46	34.93
BC08MTH	8 mm	M8	19.4 mm	43.66	20.64	42.07
BC10MT	10 mm	M10	19.4 mm	43.66	20.64	42.07
BC10MTH	10 mm	M10	22.3 mm	49.46	22.50	47.98
BC12MT	12 mm	M12	25.5 mm	57.15	21.43	53.98
BC06MTA	6 mm	M6	18 mm	38.10	17.46	34.93
BC08MTA	8 mm	M8	18 mm	38.10	17.46	34.93
BC08MTHA	8 mm	M8	19.4 mm	43.66	20.64	42.07
BC10MTA	10 mm	M10	19.4 mm	43.66	20.64	42.07
BC12MTA	12 mm	M12	25.5 mm	57.15	21.43	53.98

** All dimensions in mm



TYPE MT



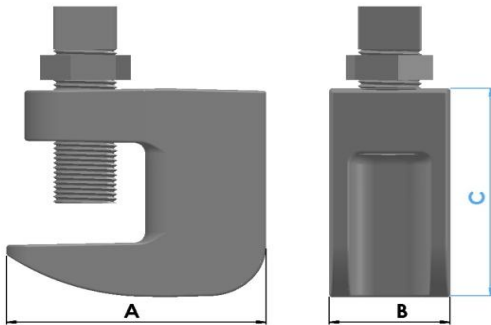
TYPE MTA

Beam Clamp - Top Threaded

Used to hang conduits etc to mounting surface with help of thread rod

Threaded on top to secure thread rod without nut

Material: Iron
Finish: Electrogalvanized
 (Use suffix HDG with Cat No. for Hot Dip Galv.)



CATNO.	SIZE	THREAD SIZE	FLANGE SIZE	DIMENSIONS		
				A	B	C
BCT1	1/4"	1/4"	11/16"	36.35	18.25	34.83
BCT2	5/16"	5/16"	11/16"	36.35	18.25	34.83
BCT3	3/8"	3/8"	3/4"	49.38	25.15	45.62
BCT4	1/2"	1/2"	3/4"	54.44	28.24	47.00

** All dimensions in mm



BEAM CLAMP

Beam Clamp - Centre Thread

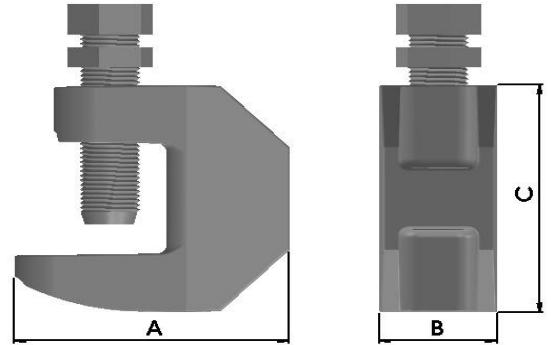
Used to hang conduits etc to mounting surface with help of thread rod

Threaded at middle to secure thread rod without nut

Material: Iron

Finish: Electrogalvanized

(Use suffix HDG with Cat No. for Hot Dip Galv.)



CATNO.	SIZE	THREAD SIZE	FLANGE SIZE	DIMENSIONS		
				A	B	C
BCCT1	1/4"	1/4"	11/16"	37.78	18.84	34.28
BCCT2	5/16"	5/16"	11/16"	37.78	18.84	34.28
BCCT3	3/8"	3/8"	3/4"	42.40	21.32	41.60
BCCT4	1/2"	1/2"	1"	54.72	23.83	52.81

** All dimensions in mm

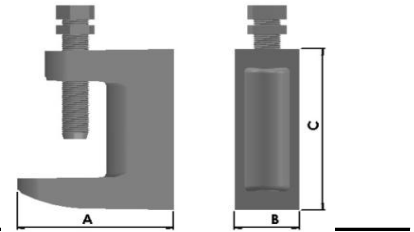
Beam Clamp - Wide Throat

Extra wide throat to secure clamp on upto 32mm/ 1-1/4" flange.

Material: Iron

Finish: Electrogalvanized

(Use suffix HDG with Cat No. for Hot Dip Galv.)



CATNO.	SIZE	HOLE SIZE	FLANGE SIZE	DIMENSIONS		
				A	B	C
BCW1	1/4"	7 mm	1-1/4"	38.10	17.46	50.12
BCW2	5/16"	9 mm	1-1/4"	38.10	17.46	50.12
BCW3	3/8"	11 mm	1-1/4"	43.66	20.64	54.07
BCW4	1/2"	13 mm	1-1/4"	57.15	21.43	62.32
BCW08	8 mm	9 mm	32 mm	38.10	17.46	50.12
BCW10	10 mm	11 mm	32 mm	43.66	20.64	54.07
BCW12	12 mm	13 mm	32 mm	57.15	21.43	62.32

** All dimensions in mm

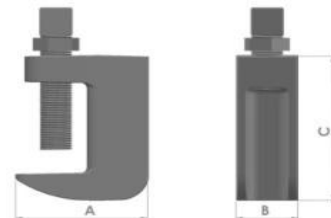
Beam Clamp - Wide Throat Threaded

Threaded clamp with wide throat for flange upto 32mm /1-1/4"

Material: Iron

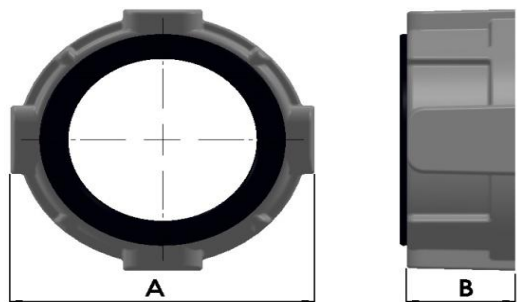
Finish: Electrogalvanized

(Use suffix HDG with Cat No. for Hot Dip Galv.)



CATNO.	SIZE	THREAD SIZE	FLANGE SIZE	DIMENSIONS		
				A	B	C
BCWT1	1/4"	1/4"	1-1/4"	36.35	18.25	50.12
BCWT2	5/16"	5/16"	1-1/4"	36.35	18.25	50.12
BCWT3	3/8"	3/8"	1-1/4"	49.38	25.15	54.07
BCWT4	1/2"	1/2"	1-1/4"	54.44	28.24	62.32
BCWT08	8 mm	M8	32 mm	36.35	18.25	50.12
BCWT10	10 mm	M10	32 mm	49.38	25.15	54.07
BCWT12	12 mm	M12	32 mm	54.44	28.24	62.32

** All dimensions in mm



Insulating Bushing - Threaded

Used to protect conductors from damage by rough and sharp edges of conduit during pulling

Nylon insulation

Material: Iron

Finish: Electrogalvanized
(Use suffix HDG with Cat No. for Hot Dip Galv.)



CATNO.	SIZE	DIMENSIONS	
		A	B
IB050	1/2"	29.50	12.00
IB075	3/4"	35.50	12.90
IB100	1"	41.40	14.50
IB125	1-1/4"	51.80	17.20
IB150	1-1/2"	60.00	16.80
IB200	2"	71.10	18.00
IB250	2-1/2"	81.80	20.20
IB300	3"	100.40	21.00
IB350	3-1/2"	114.00	23.00
IB400	4"	126.00	23.00
IB500	5"	159.30	25.40
IB600	6"	187.70	24.90
IB800	8"	242.30	32.00

** All dimensions in mm

CATNO.	SIZE	THREAD SIZE	DIMENSIONS	
			A	B
IB20	20 mm	M20	29.50	12.00
IB25	25 mm	M25	35.50	12.90
IB32	32 mm	M32	41.40	14.50
IB40	40 mm	M40	51.80	17.20
IB50	50 mm	M50	60.00	16.80
IB63	63 mm	M63	71.10	18.00

** All dimensions in mm

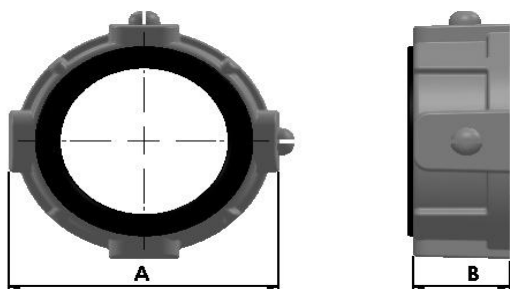
Insulating Bushing - Set Screw Type

Secures the conduit with help of 2 set screws furnished along

Eliminates the need of threading on conduit

Material: Iron

Finish: Electrogalvanized
(Use suffix HDG with Cat No. for Hot Dip Galv.)



CATNO.	SIZE	DIMENSION	
		A	B
IBS050	1/2"	29.50	12.00
IBS075	3/4"	35.50	12.90
IBS100	1"	41.40	14.50
IBS125	1-1/4"	51.80	17.20
IBS150	1-1/2"	60.00	16.80
IBS200	2"	71.10	18.00
IBS250	2-1/2"	81.80	20.20
IBS300	3"	100.40	21.00
IBS350	3-1/2"	114.00	23.00
IBS400	4"	126.00	23.00
IBS500	5"	159.30	25.40
IBS600	6"	187.70	24.90
IBS800	8"	242.30	32.00

** All dimensions in mm



CATNO.	SIZE	THREAD SIZE	DIMENSIONS	
			A	B
IBS20	20 mm	M20	29.50	12.00
IBS25	25 mm	M25	35.50	12.90
IBS32	32 mm	M32	41.40	14.50
IBS40	40 mm	M40	51.80	17.20
IBS50	50 mm	M50	60.00	16.80
IBS63	63 mm	M63	71.10	18.00

** All dimensions in mm

Disclaimer: Dimensions are for reference purpose and are subject to change within permissible limits that do not affect the usage of product. Actual product may vary from above picture.

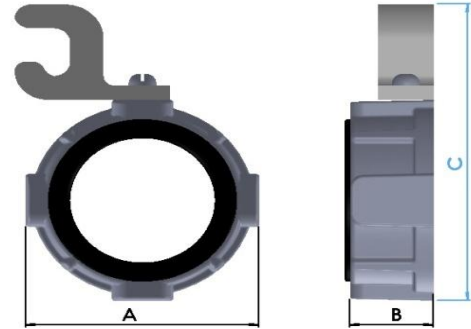
RIGID/IMC CONDUIT

Insulating Bushing - Grounding Type

Insulating bushing furnished with Aluminium Lay In Lug to provide grounding.

Material: Iron

Finish: Electrogalvanized
(Use suffix HDG with Cat No. for Hot Dip Galv.)



CATNO.	SIZE	DIMENSIONS	
		A	B
IBG050	1/2"	29.50	12.00
IBG075	3/4"	35.50	12.90
IBG100	1"	41.40	14.50
IBG125	1-1/4"	51.80	17.20
IBG150	1-1/2"	60.00	16.80
IBG200	2"	71.10	18.00
IBG250	2-1/2"	81.80	20.20
IBG300	3"	100.40	21.00
IBG350	3-1/2"	114.00	23.00
IBG400	4"	126.00	23.00
IBG500	5"	159.30	25.40
IBG600	6"	187.70	24.90
IBG800	8"	242.30	32.00

** All dimensions in mm

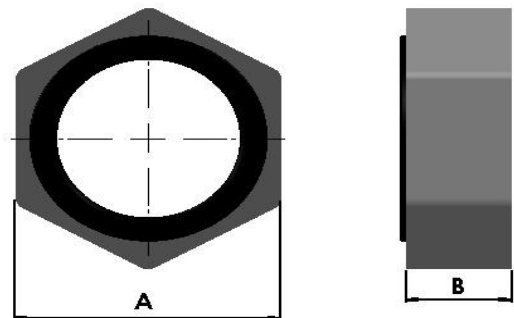
CATNO.	SIZE	THREAD SIZE	DIMENSIONS	
			A	B
IBG20	20 mm	M20	29.50	12.00
IBG25	25 mm	M25	35.50	12.90
IBG32	32 mm	M32	41.40	14.50
IBG40	40 mm	M40	51.80	17.20
IBG50	50 mm	M50	60.00	16.80
IBG63	63 mm	M63	71.10	18.00

** All dimensions in mm

Insulating Bushing - Steel

Material: Steel
(Use suffix S with Cat No. for Stainless Steel)

Finish: Electrogalvanized
(Use suffix HDG with Cat No. for Hot Dip Galv.)



CATNO.	SIZE	DIMENSIONS	
		A	B
IB050S	1/2"	26.20	15.00
IB075S	3/4"	31.50	15.00
IB100S	1"	36.83	15.00

** All dimensions in mm

CATNO.	SIZE	THREAD SIZE	DIMENSIONS	
			A	B
IB20S	20 mm	M20	26.20	15.00
IB25S	25 mm	M25	31.50	15.00
IB32S	32 mm	M32	36.83	15.00

** All dimensions in mm



Disclaimer: Dimensions are for reference purpose and are subject to change within permissible limits that do not affect the usage of product. Actual product may vary from above picture.

Reducing Bushing - Flush In Type

Used to reduce the hub size of fitting to connect smaller size conduit

Flush in design integrates with the connection

Rounded collar for smooth wire pulling

Material:

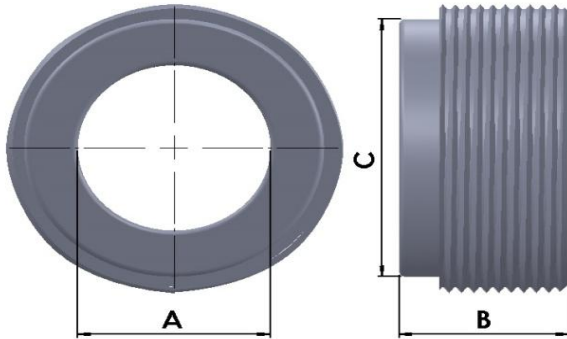
Upto 2" steel as standard

Above 2" Ductile Iron as standard

(Use suffix S with Cat No. for Steel / SS for Stainless steel)

Finish: Electrogalvanized

(Use suffix HDG with Cat No. for Hot Dip Galv.)



CATNO.	SIZE (M X F)	DIMENSIONS		
		A	B	C
RB050010	1/2" X 3/8"	10.00	15.90	17.02
RB075050	3/4" X 1/2"	15.80	15.90	22.18
RB100050	1" X 1/2"	15.80	15.90	27.88
RB100075	1" X 3/4"	20.90	15.90	27.88
RB125050	1-1/4" X 1/2"	15.80	17.65	36.36
RB125075	1-1/4" X 3/4"	20.90	17.65	36.36
RB125100	1-1/4" X 1"	26.60	17.65	36.36
RB150050	1-1/2" X 1/2"	15.80	16.75	43.04
RB150075	1-1/2" X 3/4"	20.90	16.75	43.04
RB150100	1-1/2" X 1"	26.60	16.75	43.04
RB150125	1-1/2" X 1-1/4"	35.00	16.75	43.04
RB200050	2" X 1/2"	15.80	19.30	54.86
RB200075	2" X 3/4"	20.90	19.30	54.86
RB200100	2" X 1"	26.60	19.30	54.86
RB200125	2" X 1-1/4"	35.00	19.30	54.86
RB200150	2" X 1-1/2"	40.80	19.30	54.86
RB250100	2-1/2" X 1"	26.60	25.40	66.32
RB250125	2-1/2" X 1-1/4"	35.00	25.40	66.32
RB250150	2-1/2" X 1-1/2"	40.80	25.40	66.32
RB250200	2-1/2" X 2"	52.50	25.40	66.32
RB300100	3" X 1"	26.60	25.40	82.11
RB300125	3" X 1-1/4"	35.00	25.40	82.11
RB300150	3" X 1-1/2"	40.80	25.40	82.11
RB300200	3" X 2"	52.50	25.40	82.11
RB300250	3" X 2-1/2"	62.70	25.40	82.11
RB350200	3-1/2" X 2"	52.50	25.40	96.00
RB350250	3-1/2" X 2-1/2"	62.70	25.40	96.00
RB350300	3-1/2" X 3"	77.90	25.40	96.00
RB400200	4" X 2"	52.50	25.40	107.00
RB400250	4" X 2-1/2"	62.70	25.40	107.00
RB400300	4" X 3"	77.90	25.40	107.00
RB400350	4" X 3-1/2"	90.10	25.40	107.00
RB500400	5" X 4"	102.25	25.40	134.00
RB600400	6" X 4"	102.25	25.40	160.00
RB600500	6" X 5"	128.19	25.40	160.00

CATNO.	SIZE (M X F)	DIMENSIONS		
		A	B (MAX)	C
RB2520	M25 X M20	16.00	15.90	22.00
RB3220	M32 X M20	16.00	15.90	29.00
RB3225	M32 X M25	21.00	15.90	29.00
RB4020	M40 X M20	16.00	17.65	37.00
RB4025	M40 X M25	21.00	17.65	37.00
RB4032	M40 X M32	28.00	17.65	37.00
RB5020	M50 X M20	16.00	16.75	47.00
RB5025	M50 X M25	21.00	16.75	47.00
RB5032	M50 X M32	28.00	16.75	47.00
RB5040	M50 X M40	36.00	16.75	47.00
RB6320	M63 X M20	16.00	19.30	60.00
RB6325	M63 X M25	21.00	19.30	60.00
RB6332	M63 X M32	28.00	19.30	60.00
RB6340	M63 X M40	36.00	19.30	60.00
RB6350	M63 X M50	46.00	19.30	60.00

** All dimensions in mm

Disclaimer: Dimensions are for reference purpose and are subject to change within permissible limits that do not affect the usage of product. Actual product may vary from above picture.

RIGID/IMC CONDUIT

Reducing Bushing - Hex Head Type

Used to reduce the hub size of fitting to connect smaller size conduit

Hex Head Design for tight connection

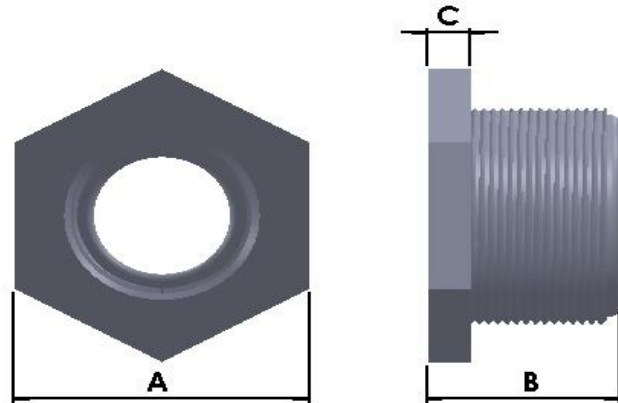
Rounded collar for smooth wire pulling

Material: Iron

(Use suffix S with Cat No. for Steel / SS for Stainless steel)

Finish: Electrogalvanized

(Use suffix HDG with Cat No. for Hot Dip Galv.)



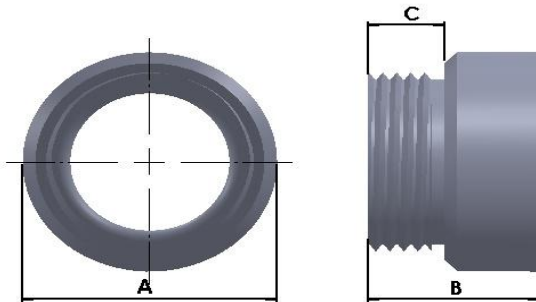
CATNO.	SIZE (M X F)	DIMENSIONS		
		A	B	C
RBH050010	1/2" X 3/8"	22.00	22.00	5.00
RBH075050	3/4" X 1/2"	27.00	22.00	5.00
RBH100050	1" X 1/2"	36.00	23.50	5.00
RBH100075	1" X 3/4"	36.00	23.50	5.00
RBH125050	1-1/4" X 1/2"	46.50	28.00	6.50
RBH125075	1-1/4" X 3/4"	46.50	28.00	6.50
RBH125100	1-1/4" X 1"	46.50	28.00	6.50
RBH150050	1-1/2" X 1/2"	50.80	28.00	6.50
RBH150075	1-1/2" X 3/4"	50.80	28.00	6.50
RBH150100	1-1/2" X 1"	50.80	28.00	6.50
RBH150125	1-1/2" X 1-1/4"	50.80	28.00	6.50
RBH200050	2" X 1/2"	65.00	32.00	6.50
RBH200075	2" X 3/4"	65.00	32.00	6.50
RBH200100	2" X 1"	65.00	32.00	6.50
RBH200125	2" X 1-1/4"	65.00	32.00	6.50
RBH200150	2" X 1-1/2"	65.00	32.00	6.50
RBH250100	2-1/2" X 1"	75.00	33.00	8.00
RBH250125	2-1/2" X 1-1/4"	75.00	33.00	8.00
RBH250150	2-1/2" X 1-1/2"	75.00	33.00	8.00
RBH250200	2-1/2" X 2"	75.00	33.00	8.00
RBH300100	3" X 1"	90.00	33.00	8.00
RBH300125	3" X 1-1/4"	90.00	33.00	8.00
RBH300150	3" X 1-1/2"	90.00	33.00	8.00
RBH300200	3" X 2"	90.00	33.00	8.00
RBH300250	3" X 2-1/2"	90.00	33.00	8.00
RBH350200	3-1/2" X 2"	103.50	33.00	8.00
RBH350250	3-1/2" X 2-1/2"	103.50	33.00	8.00
RBH350300	3-1/2" X 3"	103.50	33.00	8.00
RBH400200	4" X 2"	115.00	33.00	8.00
RBH400250	4" X 2-1/2"	115.00	33.00	8.00
RBH400300	4" X 3"	115.00	33.00	8.00
RBH400350	4" X 3-1/2"	115.00	33.00	8.00
RBH500400	5" X 4"	141.00	35.00	9.50
RBH600400	6" X 4"	167.00	35.00	9.50
RBH600500	6" X 5"	167.00	35.00	9.50

** All dimensions in mm

CATNO.	SIZE (M X F)	DIMENSIONS		
		A	B (MAX)	C
RBH2520	M25 X M20	27.00	22.00	5.00
RBH3220	M32 X M20	36.00	23.50	5.00
RBH3225	M32 X M25	36.00	23.50	5.00
RBH4020	M40 X M20	46.50	28.00	6.50
RBH4025	M40 X M25	46.50	28.00	6.50
RBH4032	M40 X M32	46.50	28.00	6.50
RBH5020	M50 X M20	50.80	28.00	6.50
RBH5025	M50 X M25	50.80	28.00	6.50
RBH5032	M50 X M32	50.80	28.00	6.50
RBH5040	M50 X M40	50.80	28.00	6.50
RBH6320	M63 X M20	65.00	32.00	6.50
RBH6325	M63 X M25	65.00	32.00	6.50
RBH6332	M63 X M32	65.00	32.00	6.50
RBH6340	M63 X M40	65.00	32.00	6.50
RBH6350	M63 X M50	65.00	32.00	6.50

Disclaimer: Dimensions are for reference purpose and are subject to change within permissible limits that do not affect the usage of product. Actual product may vary from above picture.

Enlargers



Used to increase the hub size of fitting to connect larger size conduit

Grain finish for better gripping during tightening

Rounded collar for smooth wire pulling

Material:

Upto 1" steel as standard

Above 1" Iron as standard

(Use suffix S with Cat No. for Steel / SS for Stainless steel)

Finish: Electrogalvanized

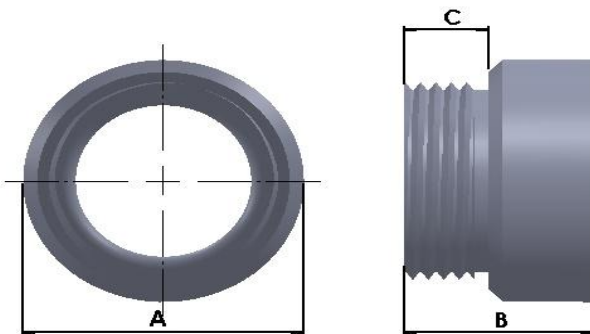
(Use suffix HDG with Cat No. for Hot Dip Galv.)



CATNO.	SIZE (F X M)	DIMENSIONS		
		A	B	C
RM075050	3/4" X 1/2"	30.00	41.75	18.61
RM100050	1" X 1/2"	36.68	49.33	21.79
RM100075	1" X 3/4"	36.68	49.33	21.79
RM125050	1-1/4" X 1/2"	48.75	47.43	19.70
RM125075	1-1/4" X 3/4"	48.75	47.43	19.70
RM125100	1-1/4" X 1"	48.75	47.43	19.70
RM150050	1-1/2" X 1/2"	56.24	47.43	19.70
RM150075	1-1/2" X 3/4"	56.24	47.43	19.70
RM150100	1-1/2" X 1"	56.24	47.43	19.70
RM150125	1-1/2" X 1-1/4"	56.24	47.43	19.70
RM200050	2" X 1/2"	66.72	47.43	19.70
RM200075	2" X 3/4"	66.72	47.43	19.70
RM200100	2" X 1"	66.72	47.43	19.70
RM200125	2" X 1-1/4"	66.72	47.43	19.70
RM200150	2" X 1-1/2"	66.72	47.43	19.70

** All dimensions in mm

Adaptors



Used to adapt the metric thread fittings with NPT fittings and otherwise

Grooved design for surface engagement of connection

Material: Steel

(Use suffix SS with Cat No. for Stainless steel)

Finish: Electrogalvanized

(Use suffix HDG with Cat No. for Hot Dip Galv.)



CATNO.	SIZE (M X F)	DIMENSIONS		
		A	B	C
ADF050	M20 X 1/2"	25.00	27.00	12.00
ADF075	M25 X 3/4"	34.00	27.00	12.00
ADF100	M32 X 1"	40.00	27.00	12.00
ADF125	M40 X 1-1/4"	50.00	29.00	12.00
ADF150	M50 X 1-1/2"	63.00	38.00	18.00
ADFM20	1/2" X M20	25.00	28.00	18.00
ADFM25	3/4" X M25	34.00	29.00	19.00
ADFM32	1" X M32	40.00	29.00	19.00
ADFM40	1-1/4" X M40	50.00	29.00	19.00
ADFM50	1-1/2" X M50	63.00	29.00	19.00

** All dimensions in mm

Disclaimer: Dimensions are for reference purpose and are subject to change within permissible limits that do not affect the usage of product. Actual product may vary from above picture.

RIGID/IMC CONDUIT

Rain Tight Hub

Used for connecting conduit pipe to enclosures for rain tight connections

Recessed O Ring

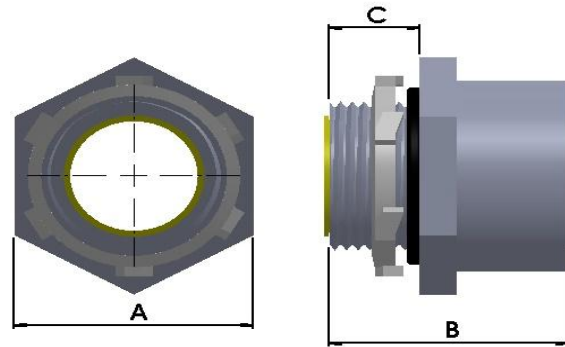
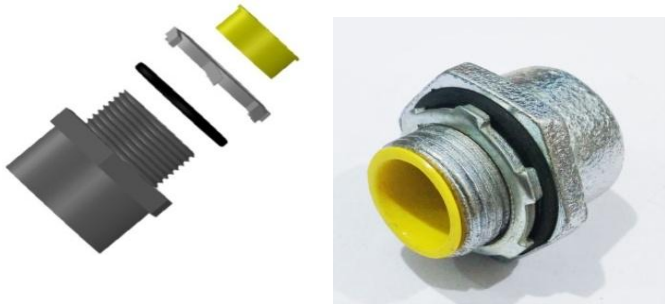
Insulated Throat

Material: Iron

(Use suffix S with Cat No. for Steel / SS for Stainless steel)

Finish: Electrogalvanized

(Use suffix HDG with Cat No. for Hot Dip Galv.)



CATNO.	SIZE	DIMENSIONS		
		A	B	C
CHM050	1/2"	37.00	33.00	12.00
CHM075	3/4"	41.00	37.00	15.00
CHM100	1"	48.00	42.00	15.00
CHM125	1-1/4"	58.00	44.00	16.00
CHM150	1-1/2"	64.00	48.00	17.50
CHM200	2"	77.00	48.00	17.50
CHM250	2-1/2"	92.00	61.00	24.00
CHM300	3"	110.00	67.00	24.00
CHM350	3-1/2"	124.00	73.00	25.40
CHM400	4"	132.00	73.00	25.40
CHM500	5"	166.00	80.00	26.18
CHM600	6"	189.00	83.00	26.18

** All dimensions in mm

Chase Nipple

Used to terminate the threaded conduit into enclosure

Insulated Throat (Optional)

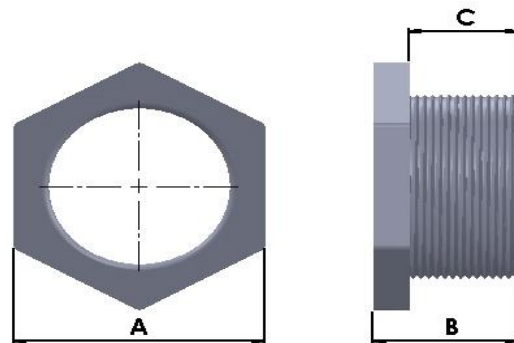
(Use suffix IT with Cat No. for Insulated Throat)

Material: Iron

(Use suffix S with Cat No. for Steel / SS for Stainless steel)

Finish: Electrogalvanized

(Use suffix HDG with Cat No. for Hot Dip Galv.)

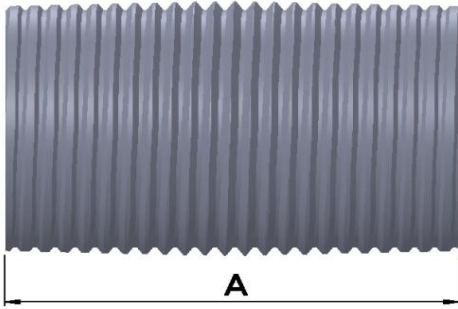


CATNO.	SIZE	DIMENSIONS		
		A	B	C
CNP050	1/2"	22.00	14.50	9.50
CNP075	3/4"	27.00	19.50	14.50
CNP100	1"	36.00	20.50	15.50
CNP125	1-1/4"	46.50	28.50	22.00
CNP150	1-1/2"	50.80	28.50	22.00
CNP200	2"	65.00	31.75	25
CNP250	2-1/2"	75.00	36.50	28.5
CNP300	3"	90.00	39.50	31.5
CNP350	3-1/2"	103.50	41.00	33
CNP400	4"	115.00	43.00	33.5
CNP500	5"	141	54	44.5
CNP600	6"	167	57	47.5

** All dimensions in mm

Disclaimer: Dimensions are for reference purpose and are subject to change within permissible limits that do not affect the usage of product. Actual product may vary from above picture.

Close Nipple



Material: Steel

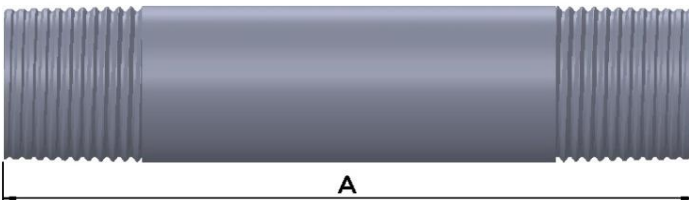
Finish: Electrogalvanized
(Use suffix HDG with Cat No. for Hot Dip Galv.)



CATNO.	SIZE	DIMENSIONS	
		A	
NP050	1/2"	28.50	
NP075	3/4"	35.00	
NP100	1"	38.00	
NP125	1-1/4"	41.50	
NP150	1-1/2"	44.50	
NP200	2"	50.80	
NP250	2-1/2"	63.50	
NP300	3"	76.25	
NP350	3-1/2"	80.00	
NP400	4"	89.00	

** All dimensions in mm

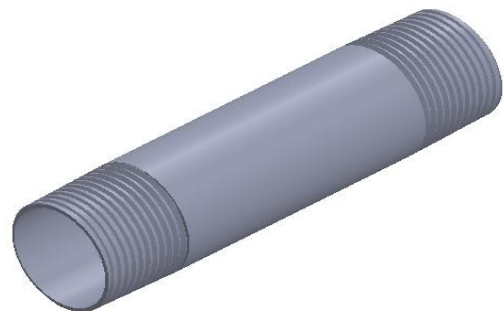
Long Nipple



Material: Steel

Add size suffix to cat no. for length eg LN100 - 12")

Finish: Electrogalvanized
(Use suffix HDG with Cat No. for Hot Dip Galv.)



CATNO.	SIZE	DIMENSIONS	
		A	
LNP050	1/2"	1-1/2" upto 12"	
LNP075	3/4"	1-1/2" upto 12"	
LNP100	1"	1-1/2" upto 12"	
LNP125	1-1/4"	1-1/2" upto 12"	
LNP150	1-1/2"	1-1/2" upto 12"	
LNP200	2"	1-1/2" upto 12"	
LNP250	2-1/2"	1-1/2" upto 12"	
LNP300	3"	1-1/2" upto 12"	
LNP350	3-1/2"	1-1/2" upto 12"	
LNP400	4"	1-1/2" upto 12"	

** All dimensions in mm

RIGID/IMC CONDUIT

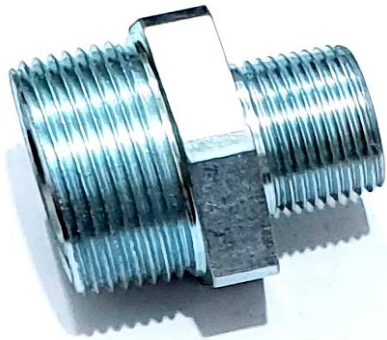
Reducing Nipple

Used to connect 2 hubs of different sizes

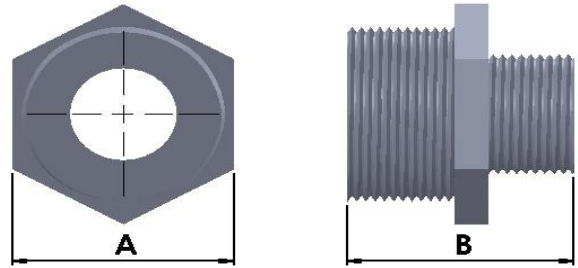
Hex design for tight connection

Material: Iron
(Use suffix S with Cat No. for Steel / SS for Stainless steel)

Finish: Electrogalvanized
(Use suffix HDG with Cat No. for Hot Dip Galv.)



STEEL REDUCING NIPPLE



CATNO.	SIZE	DIMENSIONS	
		A	B
RNP075050	3/4" x 1/2"	27.00	29.00
RNP100050	1" x 1/2"	36.00	30.00
RNP100075	1" x 3/4"	36.00	30.00
RNP125050	1-1/4" x 1/2"	46.50	38.00
RNP125075	1-1/4" x 3/4"	46.50	38.00
RNP125100	1-1/4" x 1"	46.50	38.00
RNP150050	1-1/2" x 1/2"	50.80	38.00
RNP150075	1-1/2" x 3/4"	50.80	38.00
RNP150100	1-1/2" x 1"	50.80	38.00
RNP150125	1-1/2" x 1-1/4"	50.80	38.00
RNP200100	2" x 1"	65.00	41.00
RNP200150	2" x 1-1/2"	65.00	41.00

** All dimensions in mm

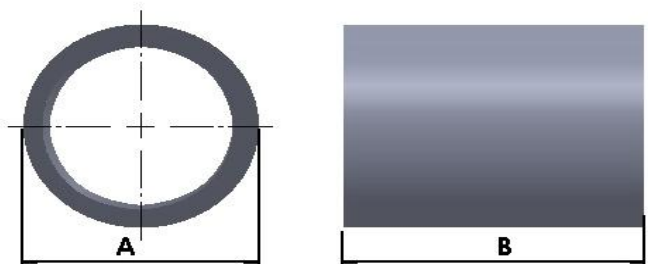
Conduit Coupling

Used to connect conduits of same size

Blasted surface for better gripping

Material: Steel

Finish: Electrogalvanized
(Use suffix HDG with Cat No. for Hot Dip Galv.)

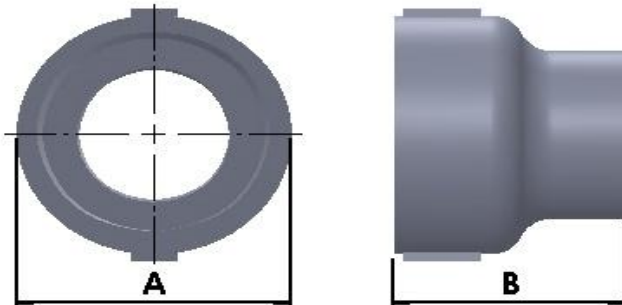


CATNO.	SIZE	DIMENSIONS	
		A	B
CP050	1/2"	25.00	42.00
CP075	3/4"	32.00	42.00
CP100	1"	38.00	51.00
CP125	1-1/4"	47.50	52.00
CP150	1-1/2"	54.75	53.00
CP200	2"	67.35	54.00
CP250	2-1/2"	82.55	81.00
CP300	3"	98.30	85.00
CP350	3-1/2"	114.30	87.00
CP400	4"	123.50	90.00
CP500	5"	152.50	101.00
CP600	6"	183.00	108.00

** All dimensions in mm

Disclaimer: Dimensions are for reference purpose and are subject to change within permissible limits that do not affect the usage of product. Actual product may vary from above picture.

Reducing Coupling



Used to connect conduits of different sizes

Material: Iron
(Use suffix S with Cat No. for Steel / SS for Stainless steel)

Finish: Electrogalvanized
(Use suffix HDG with Cat No. for Hot Dip Galv.)



CATNO.	SIZE	DIMENSIONS	
		A	B
RCP075050	3/4" x 1/2"	32.00	42.00
RCP100050	1" x 1/2"	38.00	46.50
RCP100075	1" x 3/4"	38.00	46.50
RCP125050	1-1/4" x 1/2"	49.00	47.00
RCP125075	1-1/4" x 3/4"	49.00	47.00
RCP125100	1-1/4" x 1"	49.00	51.50
RCP150050	1-1/2" x 1/2"	56.50	47.50
RCP150075	1-1/2" x 3/4"	56.50	47.50
RCP150100	1-1/2" x 1"	56.50	52.00
RCP150125	1-1/2" x 1-1/4"	56.50	52.50
RCP200100	2" x 1"	66.50	52.50
RCP200150	2" x 1-1/2"	66.50	53.50

** All dimensions in mm

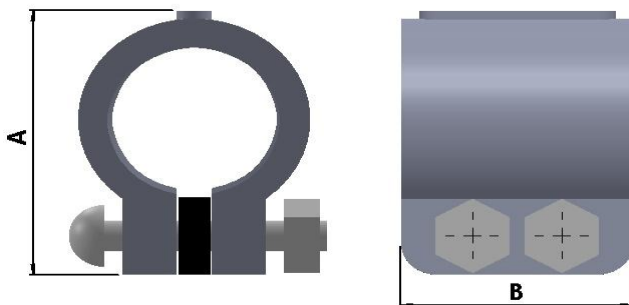
Split Coupling

Used to connect the conduits in places where turning of fitting is not possible

Furnished with gasket

Material: Iron

Finish: Electrogalvanized
(Use suffix HDG with Cat No. for Hot Dip Galv.)



CATNO.	SIZE	DIMENSIONS	
		A	B
SCP050	1/2"	46.00	31.50
SCP075	3/4"	53.00	38.00
SCP100	1"	58.00	43.00
SCP125	1-1/4"	68.00	47.20
SCP150	1-1/2"	74.00	51.36
SCP200	2"	89.00	53.80
SCP250	2-1/2"	114.00	79.00
SCP300	3"	127.00	79.00
SCP350	3-1/2"	144.00	83.57
SCP400	4"	164.00	90.23
SCP500	5"	193.00	85.00
SCP600	6"	216.00	85.00

** All dimensions in mm



Disclaimer: Dimensions are for reference purpose and are subject to change within permissible limits that do not affect the usage of product. Actual product may vary from above picture.

RIGID/IMC CONDUIT

Three Piece Coupling

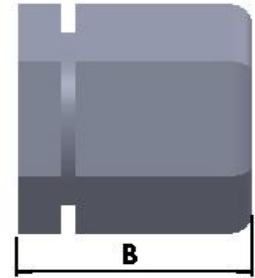
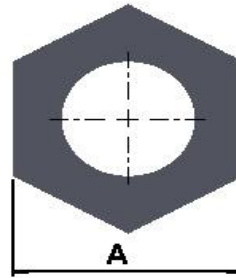
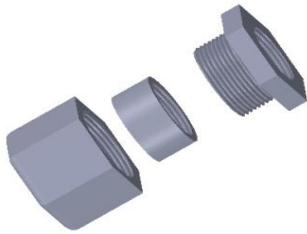
Used to connect conduits of same size

Material: Iron

(Use suffix S with Cat No. for Steel / SS for Stainless steel)

Finish: Electrogalvanized

(Use suffix HDG with Cat No. for Hot Dip Galv.)



CATNO.	SIZE	DIMENSIONS	
		A	B
TPC050	1/2"	35.00	33.00
TPC075	3/4"	40.00	39.00
TPC100	1"	48.00	41.00
TPC125	1-1/4"	60.00	54.00
TPC150	1-1/2"	72.00	60.00
TPC200	2"	78.00	67.00
TPC250	2-1/2"	103.00	71.00
TPC300	3"	111.00	76.00
TPC350	3-1/2"	119.00	90.00
TPC400	4"	135.00	92.00
TPC500	5"	176.00	93.00
TPC600	6"	190.00	93.00

** All dimensions in mm

Set Screw Connector

Used to connect conduit to box / enclosure with set screw

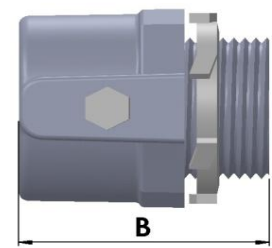
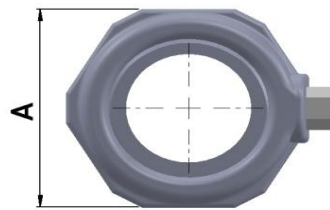
Insulated Throat (Optional)

(Use suffix IT with Cat No. for Insulated Throat)

Material: Iron

Finish: Electrogalvanized

(Use suffix HDG with Cat No. for Hot Dip Galv.)

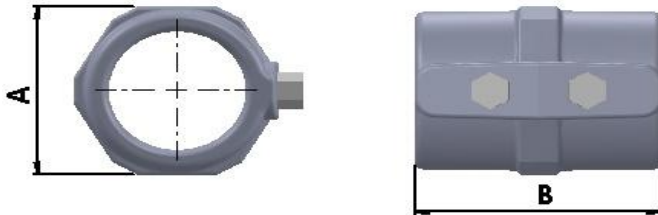


CATNO.	SIZE	DIMENSIONS		
		A	B	C
SSCN050	1/2"	33.50	35.00	12.00
SSCN075	3/4"	39.00	41.10	15.00
SSCN100	1"	46.50	48.80	15.00
SSCN125	1-1/4"	56.30	56.00	16.00
SSCN150	1-1/2"	63.00	59.00	17.50
SSCN200	2"	74.80	62.00	17.50
SSCN250	2-1/2"	93.00	81.00	24.00
SSCN300	3"	110.00	92.00	24.00
SSCN350	3-1/2"	122.00	109.00	25.40
SSCN400	4"	134.00	117.00	25.40
SSCN500	5"	165.00	119.00	26.18
SSCN600	6"	190.00	125.00	26.18

** All dimensions in mm

Disclaimer: Dimensions are for reference purpose and are subject to change within permissible limits that do not affect the usage of product. Actual product may vary from above picture.

Set Screw Coupling



Used to connect conduits of same size with set screw

Material: Iron

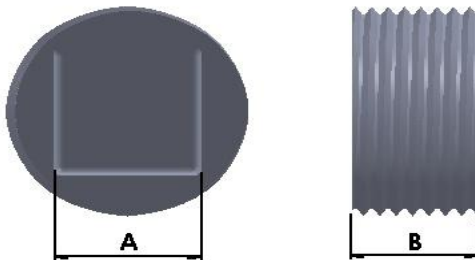
Finish: Electrogalvanized
(Use suffix HDG with Cat No. for Hot Dip Galv.)

CATNO.	SIZE	DIMENSIONS	
		A	B
SSCP050	1/2"	33.50	45.00
SSCP075	3/4"	39.00	51.00
SSCP100	1"	46.50	68.00
SSCP125	1-1/4"	56.30	70.10
SSCP150	1-1/2"	63.00	81.24
SSCP200	2"	74.80	85.70
SSCP250	2-1/2"	93.00	102.00
SSCP300	3"	110.00	108.00
SSCP350	3-1/2"	122.00	114.00
SSCP400	4"	134.00	120.00
SSCP500	5"	165.00	152.00
SSCP600	6"	190.00	165.00

** All dimensions in mm



Recessed Head Plugs



Used to close the threaded hub

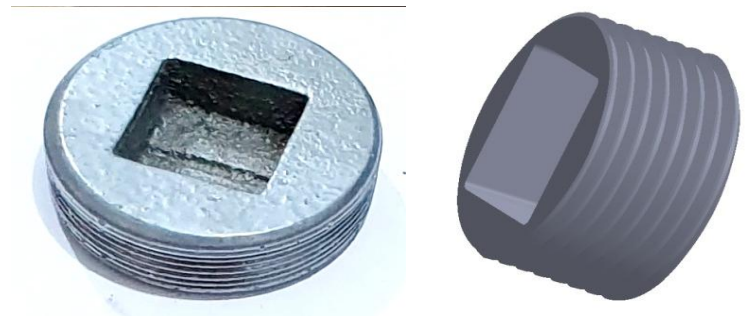
Recessed head

Material: Iron
(Use suffix S with Cat No. for Steel)

Finish: Electrogalvanized
(Use suffix HDG with Cat No. for Hot Dip Galv.)

CATNO.	SIZE	DIMENSION	
		A	B
RPG050	1/2"	10.20	12.21
RPG075	3/4"	13.41	13.52
RPG100	1"	13.41	19.54
RPG125	1-1/4"	19.00	20.00
RPG150	1-1/2"	19.00	20.20
RPG200	2"	25.80	20.56
RPG250	2-1/2"	19.80	25.40
RPG300	3"	19.65	25.40
RPG350	3-1/2"	19.80	28.30
RPG400	4"	19.83	30.20
RPG500	5"	19.72	32.10
RPG600	6"	19.80	32.10

** All dimensions in mm



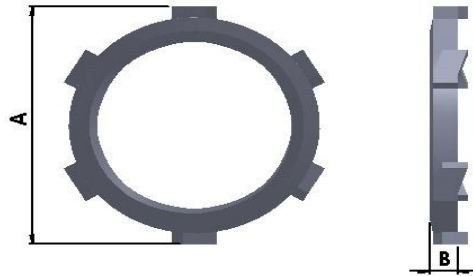
RIGID/IMC CONDUIT

Locknut

Used to connect the conduit or fitting to enclosure

Material: Steel

Finish: Electrogalvanized
(Use suffix HDG with Cat No. for Hot Dip Galv.)



CATNO.	SIZE	DIMENSION	
		A	B
LN050	1/2"	28.70	3.30
LN075	3/4"	35.10	3.30
LN100	1"	42.20	4.80
LN125	1-1/4"	57.90	4.80
LN150	1-1/2"	60.50	4.80
LN200	2"	73.20	4.80
LN250	2-1/2"	90.40	9.70
LN300	3"	108.00	9.70
LN350	3-1/2"	122.20	9.70
LN400	4"	138.20	9.70
LN500	5"	169.90	12.70
LN600	6"	201.70	12.70

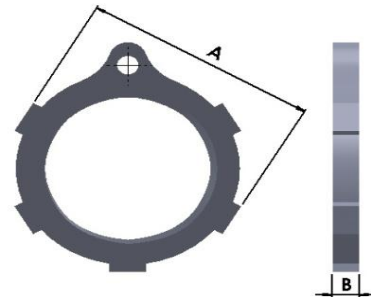
** All dimensions in mm

Grounding Locknut

Used to connect the conduit or fitting to enclosure with grounding screw

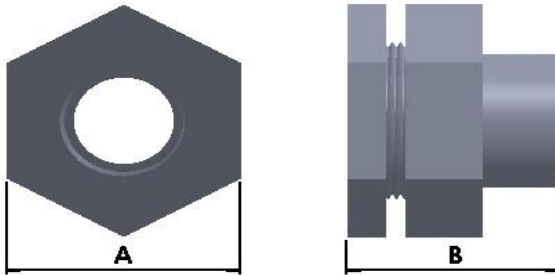
Material: Iron

Finish: Electrogalvanized
(Use suffix HDG with Cat No. for Hot Dip Galv.)



CATNO.	SIZE	DIMENSION	
		A	B
GL050	1/2"	28.70	5.00
GL075	3/4"	35.10	5.00
GL100	1"	42.20	6.00
GL125	1-1/4"	57.90	6.00
GL150	1-1/2"	60.50	6.00
GL200	2"	73.20	6.00
GL250	2-1/2"	90.40	11.00
GL300	3"	108.00	11.00
GL350	3-1/2"	122.20	11.00
GL400	4"	138.20	11.00

** All dimensions in mm



Union - Exp Proof Design (UNF)

Used to connect conduits of same size

Explosion proof design to prevent the escape of gases

Material:

Upto 1" Steel as Standard
Above 1" Iron as Standard



Finish: Electrogalvanized

(Use suffix HDG with Cat No. for Hot Dip Galv.)

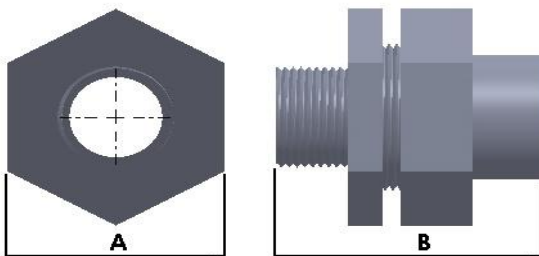
CATNO.	SIZE	DIMENSIONS	
		A	B
UNF050	1/2"	38.00	37.00
UNF075	3/4"	42.00	43.00
UNF00	1"	48.00	44.00
UNF125	1-1/4"	65.00	56.00
UNF150	1-1/2"	74.00	71.00
UNF200	2"	89.00	62.00
UNF250	2-1/2"	103.00	84.00
UNF300	3"	118.00	91.00
UNF350	3-1/2"	146.00	86.00
UNF400	4"	152.00	106.00
UNF500	5"	210.00	97.00
UNF600	6"	245.00	103.00

** All dimensions in mm



CATNO.	SIZE	DIMENSIONS	
		A	B
UNF20	20 mm	38.00	37.00
UNF25	25 mm	42.00	37.00
UNF32	32 mm	51.00	44.00

** All dimensions in mm



Union - Exp Proof Design (UNY)

Used to connect conduit to hub or other fittings

Explosion proof design to prevent the escape of gases

Material:

Upto 1" Steel as Standard
Above 1" Iron as Standard

Finish: Electrogalvanized

(Use suffix HDG with Cat No. for Hot Dip Galv.)

CATNO.	SIZE	DIMENSIONS	
		A	B
UNY050	1/2"	38.00	50.00
UNY075	3/4"	42.00	59.00
UNY00	1"	51.00	62.00
UNY125	1-1/4"	72.00	76.00
UNY150	1-1/2"	78.00	92.00
UNY200	2"	95.00	86.00
UNY250	2-1/2"	124.00	115.00
UNY300	3"	137.00	128.00
UNY350	3-1/2"	150.00	125.00
UNY400	4"	164.00	149.00
UNY500	5"	210.00	142.00
UNY600	6"	245.00	146.00

** All dimensions in mm



STEEL



STAINLESS STEEL

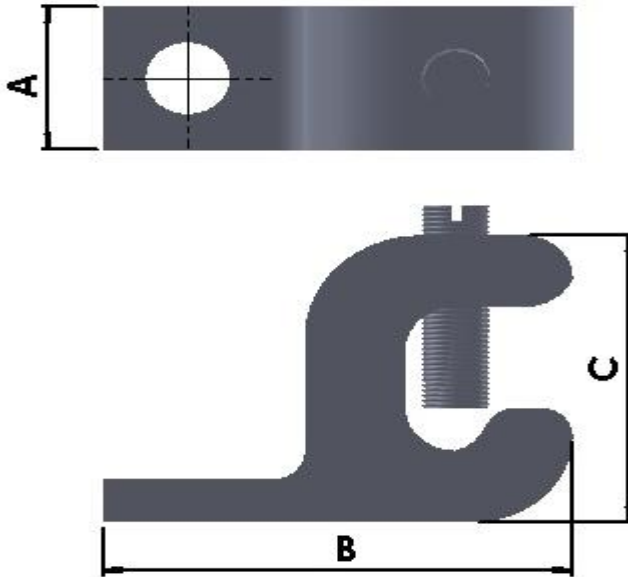
RIGID/IMC CONDUIT

Grounding Lugs - Lay In Type

Used for grounding of conductors

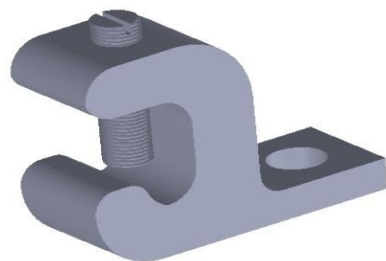
Lay In Design for attachment with other fittings

Material: Aluminium

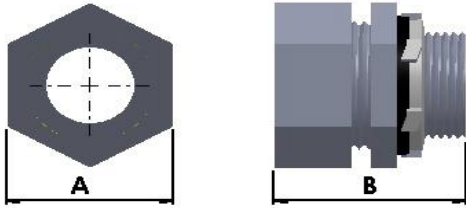


CATNO.	SIZE	DIMENSIONS		
		A	B	C
LUG1	14-4	10.00	27.00	19.00
LUG2	14-1/0	15.00	38.00	29.00
LUG3	6-250MCM	19.00	57.00	45.00

** All dimensions in mm



FLEXIBLE CONDUIT LEAD COATED



LC Connector - Straight

Used to connect Lead Coated Conduit to enclosure/ Fittings

Provides liquid tight connection

Material: Steel

Finish: Electrogalvanized
(Use suffix HDG with Cat No. for Hot Dip Galv.)

CATNO.	THREAD	SIZE	DIMENSIONS	
			A	B
LTS20LC	M20	3/4"	32.00	36.00

** All dimensions in mm



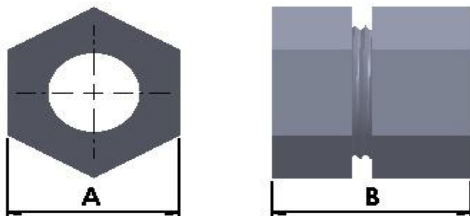
LC Connector - Female

Used to connect Lead Coated Conduit to Rigid Conduit

Provides liquid tight connection

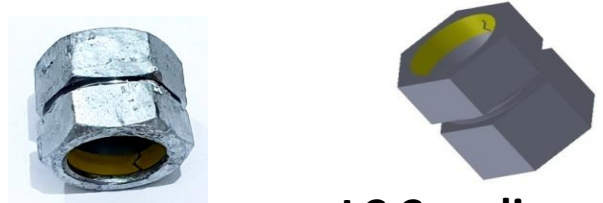
Material: Steel

Finish: Electrogalvanized
(Use suffix HDG with Cat No. for Hot Dip Galv.)



CATNO.	THREAD	SIZE	DIMENSIONS	
			A	B
LTSF20LC	M20	3/4"	32.00	36.00

** All dimensions in mm



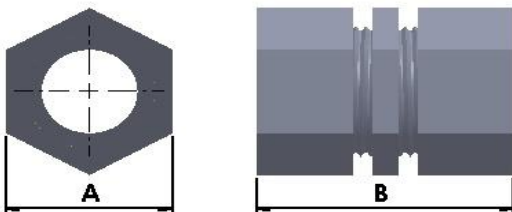
LC Coupling

Used to connect same size Lead Coated Conduit

Provides liquid tight connection

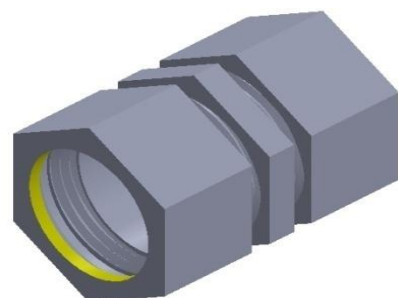
Material: Steel

Finish: Electrogalvanized
(Use suffix HDG with Cat No. for Hot Dip Galv.)



CATNO.	THREAD	SIZE	DIMENSIONS	
			A	B
LTCP20LC	M20	3/4"	32.00	46.00

** All dimensions in mm



Disclaimer: Dimensions are for reference purpose and are subject to change within permissible limits that do not affect the usage of product. Actual product may vary from above picture.

BX FLEXIBLE CONDUIT

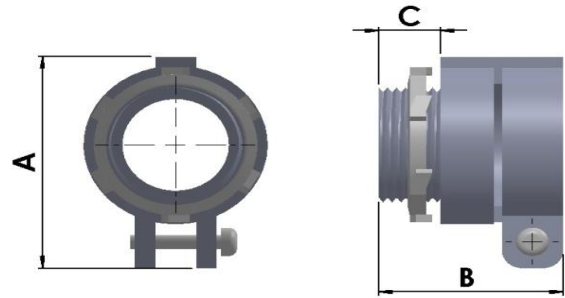
BX Flex Connector - Straight

(Squeeze Type)

Used to connect BX Flex conduit to enclosure

Material: Iron

Finish: Electrogalvanized
(Use suffix HDG with Cat No. for Hot Dip Galv.)



CATNO.	SIZE	DIMENSIONS		
		A	B	C
BXS050	1/2"	46.00	38.00	11.00
BXS075	3/4"	49.00	40.00	13.50
BXS100	1"	56.00	47.00	18.00
BXS125	1-1/4"	68.00	57.00	18.00
BXS150	1-1/2"	74.00	59.00	18.00
BXS200	2"	93.00	70.00	19
BXS250	2-1/2"	109.00	79.00	25.4
BXS300	3"	127.00	84.00	28
BXS350	3-1/2"	168.00	108.00	29
BXS400	4"	179.00	108.00	29

** All dimensions in mm

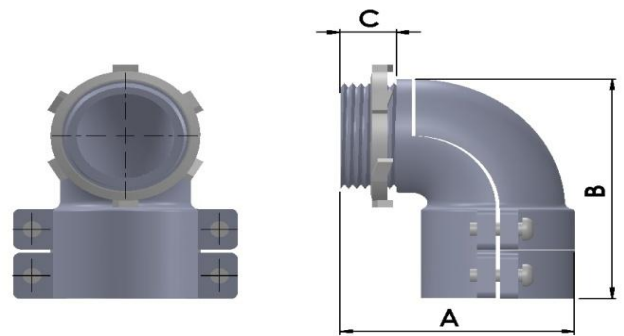
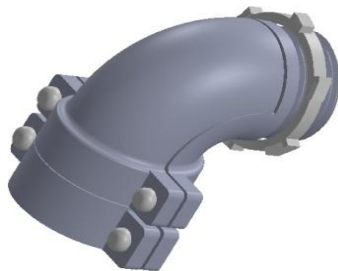
BX Flex Connector - 90 Degrees

(Squeeze Type)

Used to connect BX Flex conduit to enclosure

Material: Iron

Finish: Electrogalvanized
(Use suffix HDG with Cat No. for Hot Dip Galv.)

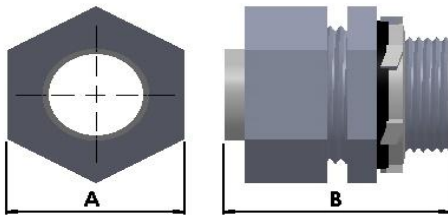


CATNO.	SIZE	DIMENSIONS		
		A	B	C
BXN050	1/2"	34.00	45.00	12.00
BXN075	3/4"	40.00	46.00	13.50
BXN100	1"	49.00	53.00	15.00
BXN125	1-1/4"	53.00	72.00	15.00
BXN150	1-1/2"	62.00	97.00	15.00
BXN200	2"	76.00	121.00	18
BXN250	2-1/2"	95.00	159.00	23
BXN300	3"	111.00	185.00	26
BXN350	3-1/2"	128.00	260.00	32
BXN400	4"	139.00	330.00	32

** All dimensions in mm

LIQUID TIGHT CONDUIT

Liquid Tight Connector - Straight



Used to connect Flexible Liquid Tight Conduit to enclosure

Material: Iron
(Use suffix S with Cat No. for Steel)

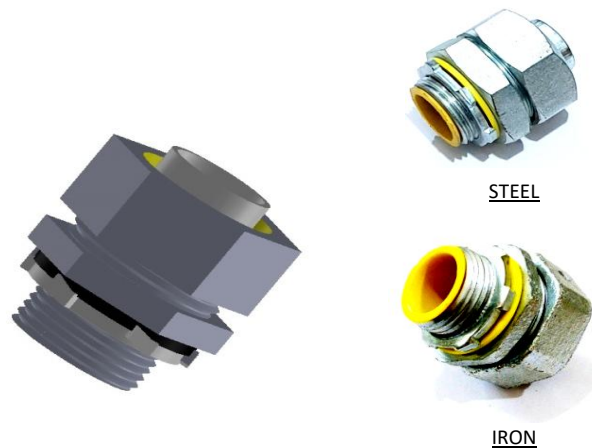
Finish: Electrogalvanized
(Use suffix HDG with Cat No. for Hot Dip Galv.)

CATNO.	SIZE	DIMENSIONS	
		A	B
LTS050	1/2"	32.00	44.00
LTS075	3/4"	38.00	43.00
LTS100	1"	43.00	49.00
LTS125	1-1/4"	56.00	51.00
LTS150	1-1/2"	62.00	53.00
LTS200	2"	76.00	61.00

** All dimensions in mm

CATNO.	SIZE	DIMENSIONS	
		A	B
LTS20	20	32.00	44.00
LTS25	25	38.00	43.00
LTS32	32	43.00	49.00
LTS40	40	56.00	51.00
LTS50	50	62.00	53.00

** All dimensions in mm

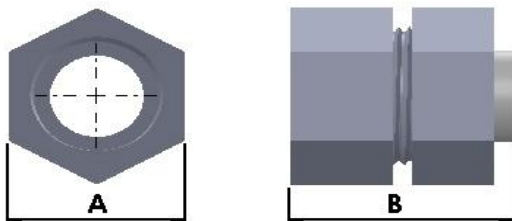


Liquid Tight Connector -Female

Used to connect Flexible Liquid Tight Conduit to Rigid Conduit

Material: Iron
(Use suffix S with Cat No. for Steel)

Finish: Electrogalvanized
(Use suffix HDG with Cat No. for Hot Dip Galv.)

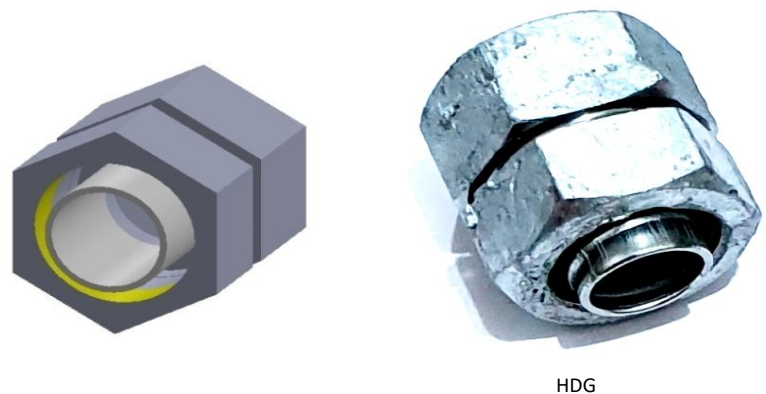


CATNO.	SIZE	DIMENSIONS	
		A	B
LTSF050	1/2"	32.00	44.00
LTSF075	3/4"	38.00	43.00
LTSF100	1"	43.00	49.00
LTSF125	1-1/4"	56.00	51.00
LTSF150	1-1/2"	62.00	53.00
LTSF200	2"	76.00	61.00

** All dimensions in mm

CATNO.	SIZE	DIMENSIONS	
		A	B
LTSF20	20	32.00	44.00
LTSF25	25	38.00	43.00
LTSF32	32	43.00	49.00
LTSF40	40	56.00	51.00
LTSF50	50	62.00	53.00

** All dimensions in mm



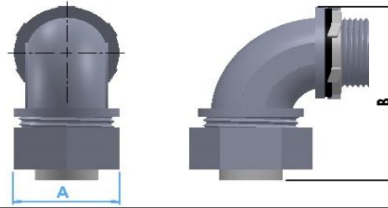
LIQUID TIGHT CONDUIT

Liquid Tight Connector - 90 deg

Used to connect Flexible Liquid Tight Conduit to enclosure

Material: Iron

Finish: Electrogalvanized
(Use suffix HDG with Cat No. for Hot Dip Galv.)



CATNO.	SIZE	DIMENSION	
		A	B
LTN050	1/2"	32.00	50.00
LTN075	3/4"	38.00	59.00
LTN100	1"	43.00	64.00
LTN125	1-1/4"	56.00	78.00
LTN150	1-1/2"	62.00	86.00
LTN200	2"	76.00	100.00

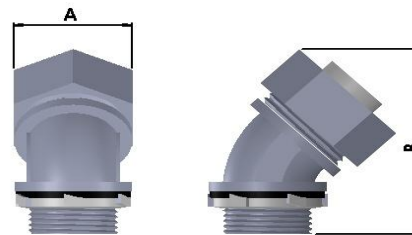
** All dimensions in mm

Liquid Tight Connector - 45 deg

Used to connect Flexible Liquid Tight Conduit to enclosure

Material: Iron

Finish: Electrogalvanized
(Use suffix HDG with Cat No. for Hot Dip Galv.)



CATNO.	SIZE	DIMENSIONS	
		A	B
LTF050	1/2"	32.00	50.00
LTF075	3/4"	38.00	59.00
LTF100	1"	43.00	64.00
LTF125	1-1/4"	56.00	78.00
LTF150	1-1/2"	62.00	86.00
LTF200	2"	76.00	100.00

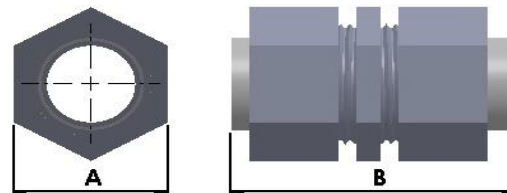
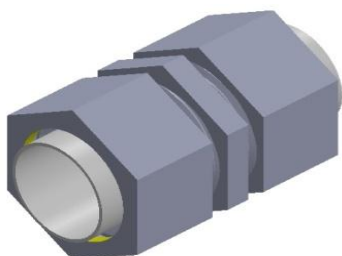
** All dimensions in mm

Liquid Tight Coupling

Used to connect same size Flexible Liquid Tight Conduit

Material: Iron
(Use suffix S with Cat No. for Steel)

Finish: Electrogalvanized
(Use suffix HDG with Cat No. for Hot Dip Galv.)

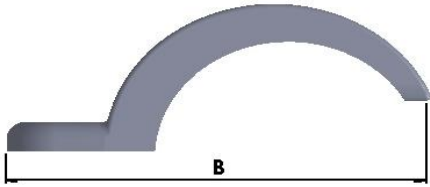


CATNO.	SIZE	DIMENSIONS	
		A	B
LTCP050	1/2"	32.00	51.00
LTCP075	3/4"	38.00	51.00
LTCP100	1"	43.00	58.00
LTCP125	1-1/4"	56.00	62.00
LTCP150	1-1/2"	62.00	80.00
LTCP200	2"	76.00	81.00

** All dimensions in mm

Disclaimer: Dimensions are for reference purpose and are subject to change within permissible limits that do not affect the usage of product. Actual product may vary from above picture.

CONDUIT SUPPORT



Rigid Conduit Strap

Used to fasten conduit to mounting surface

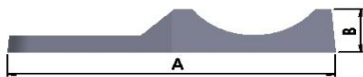
Material: Iron

Finish: Electrogalvanized
(Use suffix HDG with Cat No. for Hot Dip Galv.)

CATNO.	SIZE	SCREW SIZE	DIMENSIONS		
			A	B	C
RST050	1/2"		17.00	50.25	23.10
RST075	3/4"		17.50	59.87	23.70
RST100	1"		21.00	66.90	25.75
RST125	1-1/4"		23.00	78.50	40.00
RST150	1-1/2"		26.25	94.00	52.00
RST200	2"		35.75	114.00	61.10
RST250	2-1/2"		36.00	150.00	78.00
RST300	3"		39.00	183.00	90.00
RST350	3-1/2"		50.00	216.00	110.00
RST400	4"		53.00	226.00	122.00
RST500	5"		65.00	278.00	165.00
RST600	6"		75.00	318.00	190.00
RST800	8"		80.00	350.00	225.00
RST1000	10"		85.00	390.00	275.00



** All dimensions in mm



Spacer/Clamp Back

Used to provide gap between mounting surface and conduit

Material: Iron

Finish: Electrogalvanized
(Use suffix HDG with Cat No. for Hot Dip Galv.)

CATNO.	SIZE	SCREW SIZE	DIMENSIONS		
			A	B	C
CB050	1/2"		53.50	12.50	26.00
CB075	3/4"		62.00	12.50	28.75
CB100	1"		76.00	12.50	34.00
CB125	1-1/4"		90.00	15.00	39.00
CB150	1-1/2"		100.00	15.00	41.00
CB200	2"		129.00	21.00	50.00
CB250	2-1/2"		140.00	21.00	55.00
CB300	3"		176.00	21.00	65.00
CB350	3-1/2"		200.00	26.00	75.00
CB400	4"		222.00	26.00	80.00
CB500	5"		254.00	30.00	90.00
CB600	6"		298.00	36.00	100.00
CB800	8"		390.00	60.00	100.00
CB1000	10"		400.00	75.00	110.00

** All dimensions in mm



Disclaimer: Dimensions are for reference purpose and are subject to change within permissible limits that do not affect the usage of product. Actual product may vary from above picture.

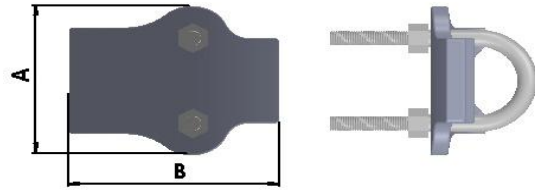
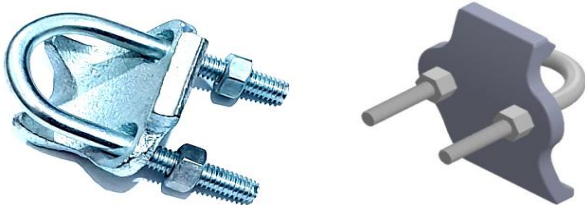
CONDUIT SUPPORT

Right Angle Conduit Support

Used for right angle run of conduit from mounting surface

Material: Iron

Finish: Electrogalvanized
(Use suffix HDG with Cat No. for Hot Dip Galv.)



CATNO.	SIZE	DIMENSIONS	
		A	B
RCS050	1/2"	47.00	51.00
RCS075	3/4"	55.00	53.00
RCS100	1"	65.00	53.00
RCS125	1-1/4"	74.00	54.00
RCS150	1-1/2"	82.00	55.00
RCS200	2"	95.00	63.00

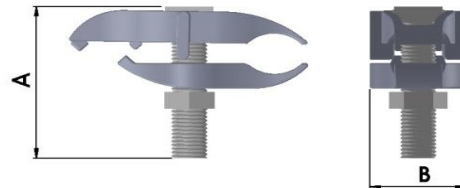
** All dimensions in mm

Parallel Conduit Support

Used for parallel run of conduit from mounting surface

Material: Iron

Finish: Electrogalvanized
(Use suffix HDG with Cat No. for Hot Dip Galv.)



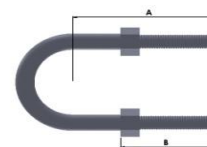
CATNO.	SIZE	DIMENSIONS	
		A	B
PCS050	1/2"	36.00	28.00
PCS075	3/4"	37.00	30.00
PCS100	1"	39.00	33.00
PCS125	1-1/4"	51.00	36.00
PCS150	1-1/2"	51.00	39.00
PCS200	2"	73.00	41.00

** All dimensions in mm

U Bolt

Material: Steel

Finish: Electrogalvanized
(Use suffix HDG with Cat No. for Hot Dip Galv.)



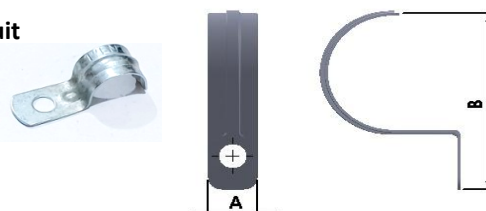
CATNO.	SIZE	DIMENSIONS	
		A	B
UB050	1/2"	63.00	38.00
UB075	3/4"	70.00	38.00
UB100	1"	76.00	38.00
UB125	1-1/4"	80.00	38.00
UB150	1-1/2"	89.00	38.00
UB200	2"	112.00	50.00

EMT Strap

Used to clamp EMT Conduit

Material: Steel

Finish: Electrogalvanized



CATNO.	SIZE	DIMENSIONS	
		A	B
EST050	1/2"	50.25	23.10
EST075	3/4"	59.87	23.70
EST100	1"	66.90	25.75
EST125	1-1/4"	78.50	40.00
EST150	1-1/2"	94.00	52.00
EST200	2"		

** All dimensions in mm

Disclaimer: Dimensions are for reference purpose and are subject to change within permissible limits that do not affect the usage of product. Actual product may vary from above picture.

CONDUIT BODY

Conduit Outlet Bodies (Series 5)

Used for pulling and splicing of conductors in the electrical raceways.

Provides protection and access to conductors for future maintenance.

Robust metallic build for mechanical protection of raceways.

Smooth design eliminates sharp edges to provide easy handling and prevent injuries during handling/fitting.

Flat back design provides increased body volume

Smooth round collar/ end stop for damage free pulling of conductors

Dome type cover provides extra capacity.

Peel off nitrile/EPDM gasket for access to extra volume

Unique universal cover design accomodates screws with different head types.



Material
Iron

Finish
Zinc ElectroGalvanized
Zinc Polymer Enamel

Hot Dip Galvanized (Optional)
* For Hot Dip Galvanized finish add suffix HDG to cat no.

(example: LB25CGHDG stands for Hot Dip Galvanized 3/4" LB Assy(with cover and gasket)

Epoxy Coating
* For Epoxy Coated finish add suffix EC to cat no.

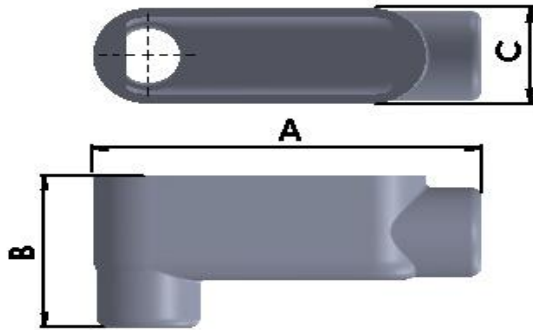
(example: LB25CGEC stands for Epoxy Coated 3/4" LB Assy(with cover and gasket)

Hub Size	Wiring Capacity (Cu. In.)								
	Conduit Body Type								
	LB	LL	LR	C	T	TB	X	E	Cover
1/2"	4.8	4.8	4.8	4.8	6.3	4.3	6.3	4.8	0.4
3/4"	7.5	7.5	7.5	7.5	9.5	7.5	9.5	7.5	0.8
1"	12.5	12.5	12.5	12.5	15.0	12.5	15.0	12.5	1.19
1-1/4"	32.9	32.9	32.9	32.9	32.9	32.9	32.9	32.9	2.89
1-1/2"	34.8	34.8	34.8	34.8	34.8	34.8	34.8	34.8	2.89
2"	71.0	71.0	71.0	71.0	71.0	71.0	71.0	71.0	5.22

Disclaimer: Dimensions are for reference purpose and are subject to change within permissible limits that do not affect the usage of product. Actual product may vary from above picture.

CONDUIT BODY

Type LB



Material: Iron

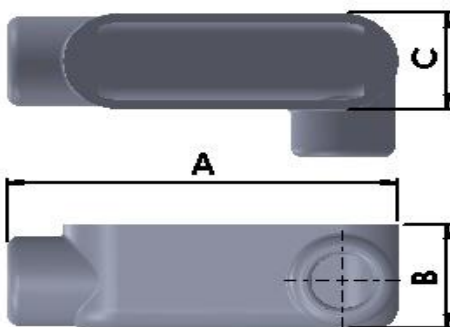
Finish: Electrogalvanized/Zinc Polymer
(Use suffix HDG with Cat No. for Hot Dip Galv.)



CATNO.	SIZE	DIMENSION		
		A	B	C
LB15CG	1/2"	118.00	56.00	36.00
LB25CG	3/4"	138.00	63.00	40.00
LB35CG	1"	161.00	73.00	46.00
LB45CG	1-1/4"	210.00	96.00	64.00
LB55CG	1-1/2"	210.00	101.00	64.00
LB65CG	2"	270.00	114.00	80.00

** All dimensions in mm

Type LL



Material: Iron

Finish: Electrogalvanized/Zinc Polymer
(Use suffix HDG with Cat No. for Hot Dip Galv.)



CATNO.	SIZE	DIMENSION		
		A	B	C
LL15CG	1/2"	118.00	38.00	54.00
LL25CG	3/4"	138.00	43.00	60.00
LL35CG	1"	161.00	50.00	69.00
LL45CG	1-1/4"	210.00	70.00	90.00
LL55CG	1-1/2"	210.00	75.00	90.00
LL65CG	2"	270.00	86.00	108.00

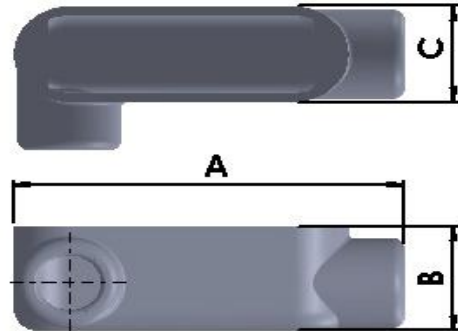
** All dimensions in mm

CONDUIT BODY

Type LR

Material: Iron

Finish: Electrogalvanized/Zinc Polymer
(Use suffix HDG with Cat No. for Hot Dip Galv.)



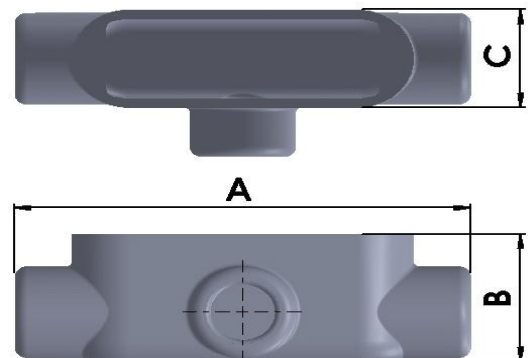
CATNO.	SIZE	DIMENSION		
		A	B	C
LR15CG	1/2"	118.00	38.00	54.00
LR25CG	3/4"	138.00	43.00	60.00
LR35CG	1"	161.00	50.00	69.00
LR45CG	1-1/4"	210.00	70.00	90.00
LR55CG	1-1/2"	210.00	75.00	90.00
LR65CG	2"	270.00	86.00	108.00

** All dimensions in mm

Type T

Material: Iron

Finish: Electrogalvanized/Zinc Polymer
(Use suffix HDG with Cat No. for Hot Dip Galv.)



CATNO.	SIZE	DIMENSION		
		A	B	C
T15CG	1/2"	136.00	48.00	54.00
T25CG	3/4"	158.00	54.00	60.00
T35CG	1"	184.00	59.50	69.00
T45CG	1-1/4"	236.00	70.00	90.00
T55CG	1-1/2"	236.00	75.00	90.00
T65CG	2"	298.00	86.00	108.00

** All dimensions in mm

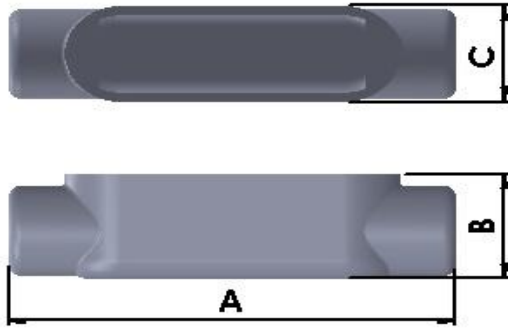
Disclaimer: Dimensions are for reference purpose and are subject to change within permissible limits that do not affect the usage of product. Actual product may vary from above picture.

CONDUIT BODY

Type C

Material: Iron

Finish: Electrogalvanized/Zinc Polymer
(Use suffix HDG with Cat No. for Hot Dip Galv.)



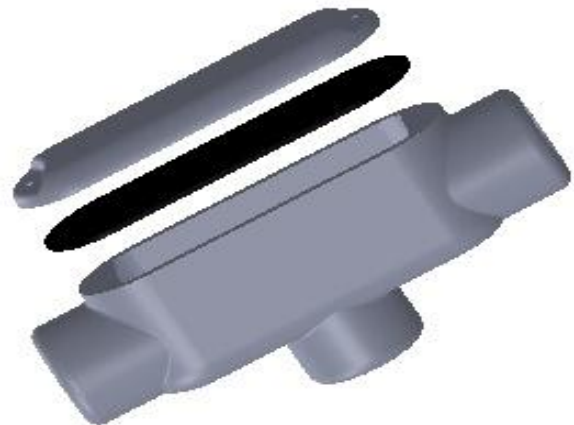
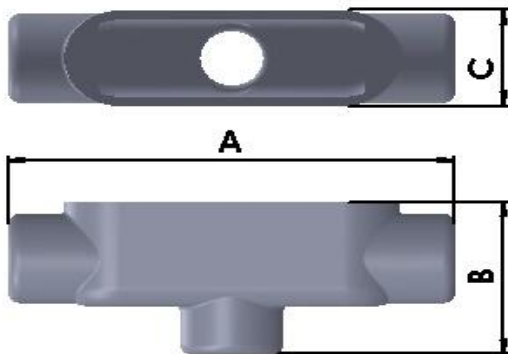
CATNO.	SIZE	DIMENSION		
		A	B	C
C15CG	1/2"	136.00	38.00	36.00
C25CG	3/4"	158.00	43.00	40.00
C35CG	1"	184.00	50.00	46.00
C45CG	1-1/4"	236.00	70.00	64.00
C55CG	1-1/2"	236.00	75.00	64.00
C65CG	2"	298.00	86.00	80.00

** All dimensions in mm

Type TB

Material: Iron

Finish: Electrogalvanized/Zinc Polymer
(Use suffix HDG with Cat No. for Hot Dip Galv.)



CATNO.	SIZE	DIMENSION		
		A	B	C
TB15CG	1/2"	136.00	56.00	36.00
TB25CG	3/4"	158.00	63.00	40.00
TB35CG	1"	184.00	73.00	46.00
TB45CG	1-1/4"	236.00	96.00	64.00
TB55CG	1-1/2"	236.00	101.00	64.00
TB65CG	2"	298.00	114.00	80.00

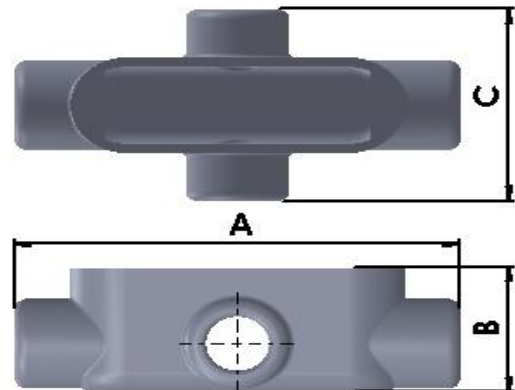
** All dimensions in mm

CONDUIT BODY

Type X

Material: Iron

Finish: Electrogalvanized/Zinc Polymer
(Use suffix HDG with Cat No. for Hot Dip Galv.)



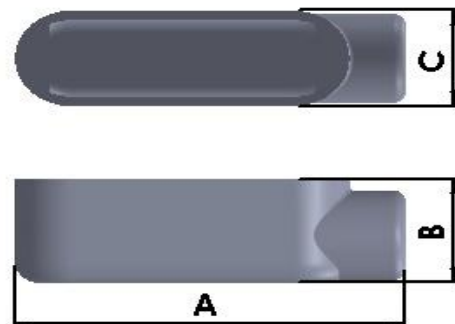
CATNO.	SIZE	DIMENSION		
		A	B	C
X15CG	1/2"	136.00	48.00	72.00
X25CG	3/4"	158.00	54.00	80.00
X35CG	1"	184.00	59.50	92.00
X45CG	1-1/4"	236.00	70.00	116.00
X55CG	1-1/2"	236.00	75.00	116.00
X65CG	2"	298.00	86.00	136.00

** All dimensions in mm

Type E

Material: Iron

Finish: Electrogalvanized/Zinc Polymer
(Use suffix HDG with Cat No. for Hot Dip Galv.)



CATNO.	SIZE	DIMENSION		
		A	B	C
E15CG	1/2"	118.00	38.00	36.00
E25CG	3/4"	138.00	43.00	40.00
E35CG	1"	161.00	50.00	46.00
E45CG	1-1/4"	210.00	70.00	64.00
E55CG	1-1/2"	210.00	75.00	64.00
E65CG	2"	270.00	86.00	80.00

** All dimensions in mm

CONDUIT BODY

Conduit Outlet Bodies (Form 7)

Used for pulling and splicing of conductors in the electrical raceways.

Provides protection and access to conductors for future maintenance.

Robust metallic build for mechanical protection of raceways.

Smooth design eliminates sharp edges to provide easy handling and prevent injuries during handling/fitting.

Smooth round collar/ end stop for damage free pulling of conductors

Material
Iron

Finish
Zinc Electro Galvanized
Zinc Polymer Enamel

Hot Dip Galvanized (Optional)
* For Hot Dip Galvanized finish add suffix HDG to cat no.
(example: LB27HDG stands for Hot Dip Galvanized 3/4" LB



TYPE LB



TYPE T



TYPE LL



TYPE LR



TYPE C



TYPE TB

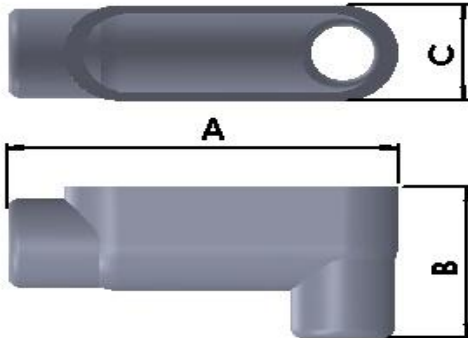
Wiring Capacity Conduit Body Type

Hub Size	LB	LL	LR	C	T	TB
1/2"	-	-	-	-	-	-
3/4"	3#6 AWG	3#6 AWG	3#6 AWG	3#6 AWG	3#6 AWG	3#6 AWG
1"	3#4 AWG	3#4 AWG	3#4 AWG	3#4 AWG	3#4 AWG	3#4 AWG
1-1/4"	3#3 AWG	3#3 AWG	3#3 AWG	3#3 AWG	3#3 AWG	3#3 AWG
1-1/2"	3#1 AWG	3#2 AWG	3#2 AWG	3#2 AWG	3#2 AWG	3#1 AWG
2"	3#1/0 AWG	3#2 AWG	3#2 AWG	3#2 AWG	3#2 AWG	3#1/0 AWG

Disclaimer: Dimensions are for reference purpose and are subject to change within permissible limits that do not affect the usage of product. Actual product may vary from above picture.

CONDUIT BODY

Type LB



Material: Iron

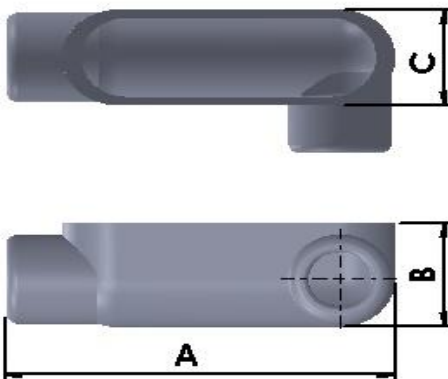
Finish: Electrogalvanized/Zinc Polymer
(Use suffix HDG with Cat No. for Hot Dip Galv.)



CATNO.	SIZE	DIMENSION		
		A	B	C
LB17	1/2"	114.30	60.30	34.93
LB27	3/4"	130.18	63.50	38.10
LB37	1"	152.40	73.03	44.45
LB47	1-1/4"	168.28	85.73	57.15
LB57	1-1/2"	184.15	98.43	63.50
LB67	2"	209.55	114.30	76.20

** All dimensions in mm

Type LL



Material: Iron

Finish: Electrogalvanized/Zinc Polymer
(Use suffix HDG with Cat No. for Hot Dip Galv.)



CATNO.	SIZE	DIMENSION		
		A	B	C
LL17	1/2"	114.30	38.10	34.93
LL27	3/4"	130.18	47.63	38.10
LL37	1"	152.40	57.15	44.45
LL47	1-1/4"	168.28	60.33	57.15
LL57	1-1/2"	184.15	66.68	63.50
LL67	2"	209.55	85.73	76.20

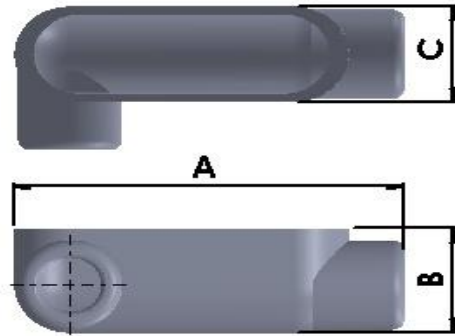
** All dimensions in mm

CONDUIT BODY

Type LR

Material: Iron

Finish: Electrogalvanized/Zinc Polymer
(Use suffix HDG with Cat No. for Hot Dip Galv.)



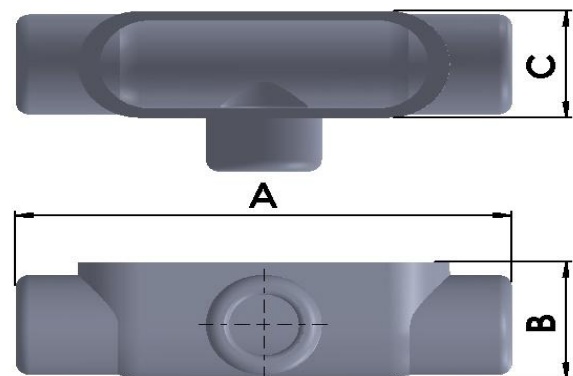
CATNO.	SIZE	DIMENSION		
		A	B	C
LR17	1/2"	114.30	38.10	34.93
LR27	3/4"	130.18	47.63	38.10
LR37	1"	152.40	57.15	44.45
LR47	1-1/4"	168.28	60.33	57.15
LR57	1-1/2"	184.15	66.68	63.50
LR67	2"	209.55	85.73	76.20

** All dimensions in mm

Type T

Material: Iron

Finish: Electrogalvanized/Zinc Polymer
(Use suffix HDG with Cat No. for Hot Dip Galv.)



CATNO.	SIZE	DIMENSION		
		A	B	C
T17	1/2"	136.52	38.10	34.93
T27	3/4"	155.58	47.63	38.10
T37	1"	177.80	57.15	44.45
T47	1-1/4"	190.50	60.33	57.15
T57	1-1/2"	212.73	66.68	63.50
T67	2"	241.30	85.73	76.20

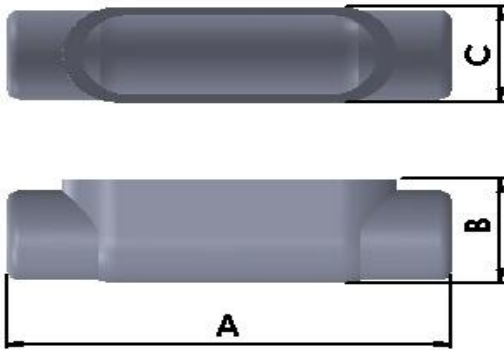
** All dimensions in mm

CONDUIT BODY

Type C

Material: Iron

Finish: Electrogalvanized/Zinc Polymer
(Use suffix HDG with Cat No. for Hot Dip Galv.)



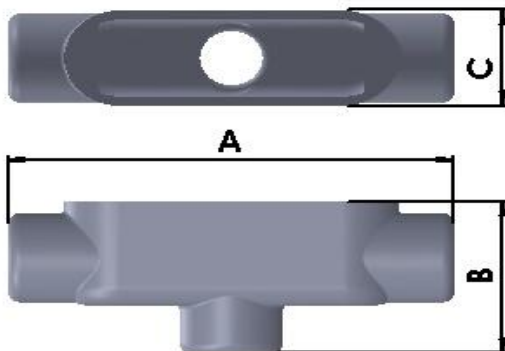
CATNO.	SIZE	DIMENSION		
		A	B	C
C17	1/2"	136.52	38.10	34.93
C27	3/4"	155.58	47.63	38.10
C37	1"	177.80	57.15	44.45
C47	1-1/4"	190.50	60.33	57.15
C57	1-1/2"	212.73	66.68	63.50
C67	2"	241.30	85.73	76.20

** All dimensions in mm

Type TB

Material: Iron

Finish: Electrogalvanized/Zinc Polymer
(Use suffix HDG with Cat No. for Hot Dip Galv.)



CATNO.	SIZE	DIMENSION		
		A	B	C
TB17	1/2"	136.52	60.30	34.93
TB27	3/4"	155.58	63.50	38.10
TB37	1"	177.80	73.03	44.45
TB47	1-1/4"	190.50	85.73	57.15
TB57	1-1/2"	212.73	98.43	63.50
TB67	2"	241.30	114.30	76.20

** All dimensions in mm

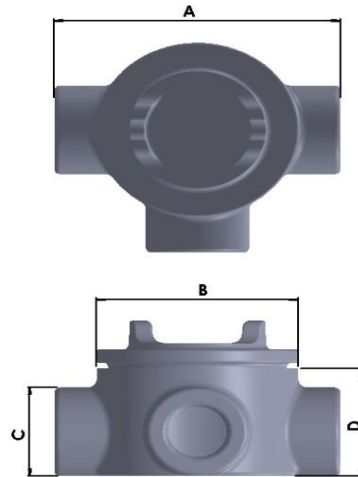
CONDUIT OUTLET BOX

Type GUAT

Explosion Proof Design

Material: Iron

Finish: Electrogalvanized/ Hot Dip Galvanized
(Use suffix HDG with Cat No. for Hot Dip Galv.)



CATNO.	SIZE	DIMENSIONS			
		A	B	C	D
GUAT050	1/2"	130.00	92.00	32.00	51.00
GUAT075	3/4"	130.00	92.00	37.00	57.00
GUAT100	1"	136.00	92.00	44.00	63.00
GUAT125	1-1/4"	165.00	108.00	56.00	79.00
GUAT150	1-1/2"	200.00	143.00	63.00	95.00
GUAT200	2"	206.00	143.00	76.00	105.00

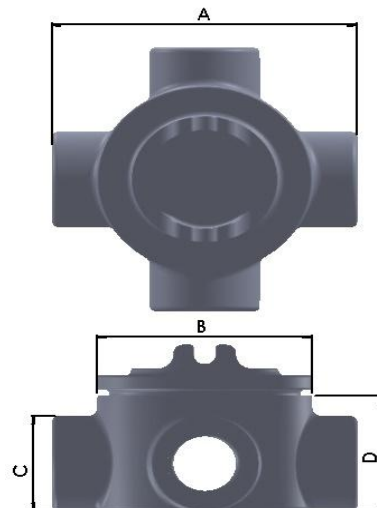
** All dimensions in mm

Type GUAX

Explosion Proof Design

Material: Iron

Finish: Electrogalvanized/ Hot Dip Galvanized
(Use suffix HDG with Cat No. for Hot Dip Galv.)



CATNO.	SIZE	DIMENSIONS			
		A	B	C	D
GUAX050	1/2"	130.00	92.00	32.00	51.00
GUAX075	3/4"	130.00	92.00	37.00	57.00
GUAX100	1"	136.00	92.00	44.00	63.00
GUAX125	1-1/4"	165.00	108.00	56.00	79.00
GUAX150	1-1/2"	200.00	143.00	63.00	95.00
GUAX200	2"	206.00	143.00	76.00	105.00

** All dimensions in mm

